

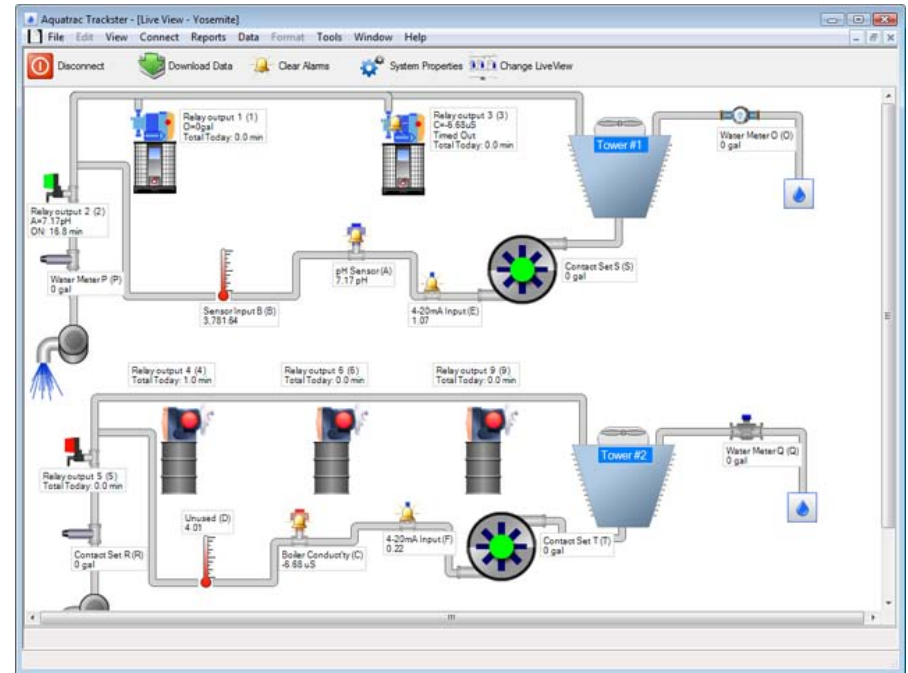
Trackster 3 Overview

ProMinent Training

What is Trackster?

Experts in Chem-Feed and Water Treatment

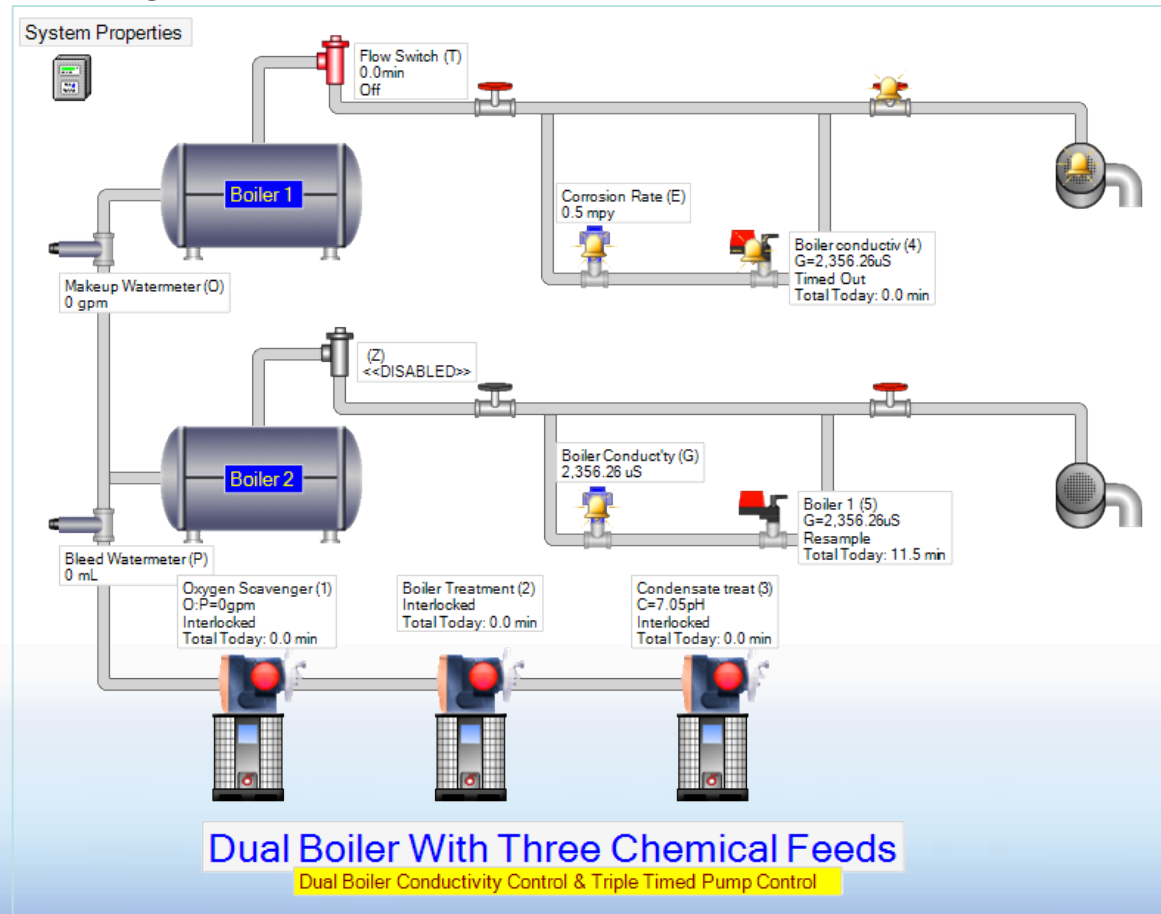
- **Human Machine Interface**
 - Interact with Multiflex and Aegis controllers



What is Trackster?

Experts in Chem-Feed and Water Treatment

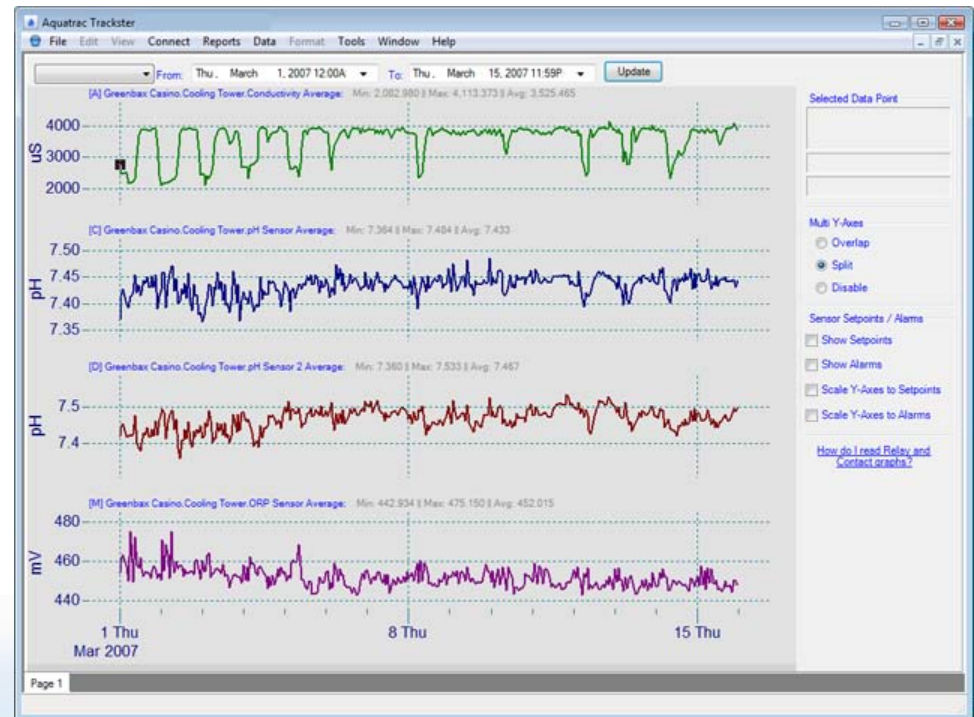
- **Human Machine Interface**
 - ✓ Interact with Multiflex and Aegis controllers
- View real-time status



What is Trackster?

Experts in Chem-Feed and Water Treatment

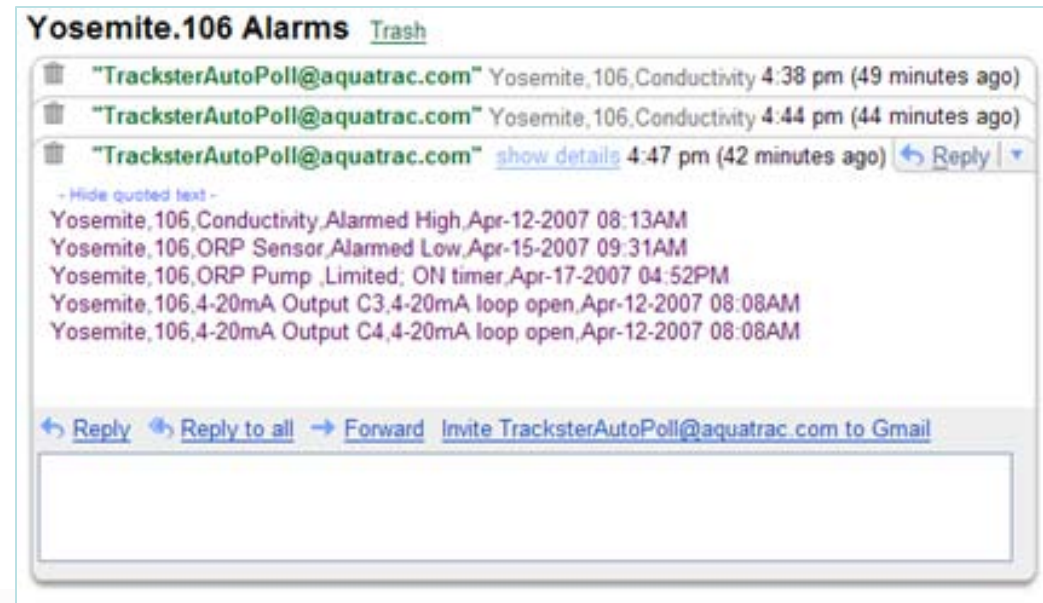
- **Human Machine Interface**
 - ✓ Interact with Multiflex and Aegis controllers
 - ✓ View real-time status
- Reporting on Historical Data



What is Trackster?

- **Human Machine Interface**
 - ✓ Interact with Multiflex and Aegis controllers
 - ✓ View real-time status
 - ✓ Reporting on Historical Data
- AutoPoll Alarms

Receive alarms in your Inbox



What is Trackster?

Experts in Chem-Feed and Water Treatment

- **Human Machine Interface**
 - ✓ Interact with Multiflex and Aegis controllers
 - ✓ View real-time status
 - ✓ Reporting on Historical Data
- AutoPoll Alarms

Receive alarms on your cell phone



What is Trackster?

Experts in Chem-Feed and Water Treatment

- **Human Machine Interface**
 - ✓ Interact with Multiflex and Aegis controllers
 - ✓ View real-time status
 - ✓ Reporting on Historical Data
 - ✓ AutoPoll Alarms
- AutoPoll Historical Data

No more waiting!



What is Trackster?

Experts in Chem-Feed and Water Treatment

- **Human Machine Interface**
 - ✓ Interact with Multiflex and Aegis controllers
 - ✓ View real-time status
 - ✓ Reporting on Historical Data
 - ✓ AutoPoll Alarms
- AutoPoll Historical Data

Receive historical data in your Inbox

From: TracksterAutoPoll@aquatrac.com [Add to Address Book](#) [Add Mobile Alert](#)

Subject: Yosemite.106 Historical Data

Date: Tue, 24 Apr 2007 16:43:59 -0700

Historical Data for the Yosemite.106 controller is attached to this email.

To import the attached data into Trackster, follow these instructions:

1. Save the attachment to your desktop. Make sure the file is saved with a .txz extension.
2. After the attachment has been downloaded to your desktop, go to your desktop and double click the file
3. The data import process will begin.
4. Done

This email was sent via Trackster's AutoPoll Historical Data utility.

Attachments Attachment scanning provided by:

Files:

Yosemite.106_Data_tmp59.txz (9k) [Scan and Save to Computer](#) - [Save to Yahoo! Briefcase](#)

[Delete](#) [Reply](#) [Forward](#) [Spam](#) [Move...](#)

[Previous](#) | [Next](#) | [Back to Messages](#) [Save Message To](#)

What is Trackster?

Experts in Chem-Feed and Water Treatment

- Human Machine Interface

- Interact with Multiflex and Aegis controllers
- View real-time status
- Reporting on Historical Data
- AutoPoll Alarms
- AutoPoll Historical Data
- Configure I/O

The screenshot displays the Trackster HMI interface. On the left, a process diagram titled 'Dual Boiler With Three Chem' shows two boilers (Boiler 1 and Boiler 2) connected to various sensors and control points. A yellow highlight is under the text 'Dual Boiler Conductivity Control & Triple Tim'. On the right, a configuration window for 'Oxygen Scavenger (1)' is open, showing the following settings:

- Control Type:** Meter
- Sensor Controlled:** TWR Conductivity (A), Temperature (B), pH Sensor (C), ORP Sensor (D), Corrosion Rate (E), Corrosion Rate (F)
- Setpoint Control:** Rising Setpoint, During Events (unchecked)
- Meter Controlled:** Control By: Sequence
- Equation:** Makeup Watermeter (O) / Bleed Watermeter (P)
- Measure Volume:** 0
- On Time (sec):** 0
- Sequence:** Turn On At Volume: 5000 m On Meter: Makeup Watermeter; Turn Off At Volume: 2500 mL On Meter: Bleed Watermeter (P)
- Contact Controlled:** Flow Switch (T), Contact Control Equation, Turn On Setpoint (sec): 3600

What is Trackster?

- **Human Machine Interface**
 - ✓ Interact with Multiflex and Aegis controllers
 - ✓ View real-time status
 - ✓ Reporting on Historical Data
 - ✓ AutoPoll Alarms
 - ✓ AutoPoll Historical Data
 - ✓ Configure I/O
- Save and Restore Configuration



What is Trackster?

- **Human Machine Interface**
 - ✓ Interact with Multiflex and Aegis controllers
 - ✓ View real-time status
 - ✓ Reporting on Historical Data
 - ✓ AutoPoll Alarms
 - ✓ AutoPoll Historical Data
 - ✓ Configure I/O
- Save and Restore Configuration

Clone your controllers

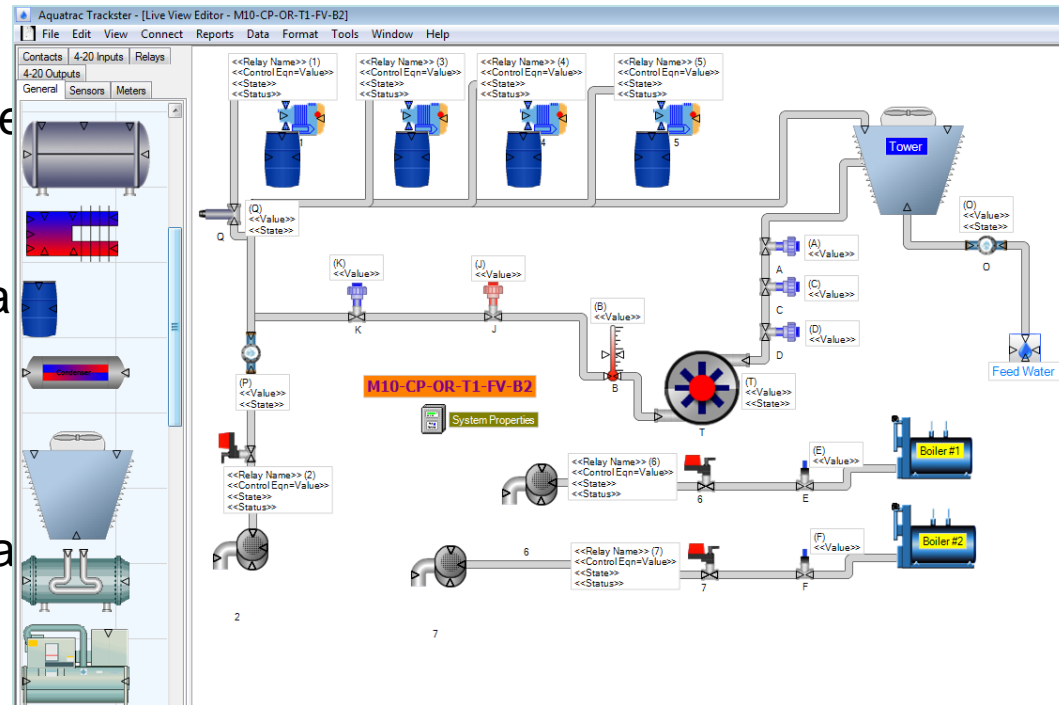


What is Trackster?

Experts in Chem-Feed and Water Treatment

■ Human Machine Interface

- ✓ Interact with Multiflex and AEC controllers
- ✓ View real-time status
- ✓ Reporting on Historical Data
- ✓ AutoPoll Alarms
- ✓ AutoPoll Historical Data
- ✓ Configure I/O
- ✓ Save and Restore Configuration
- Custom Live Views

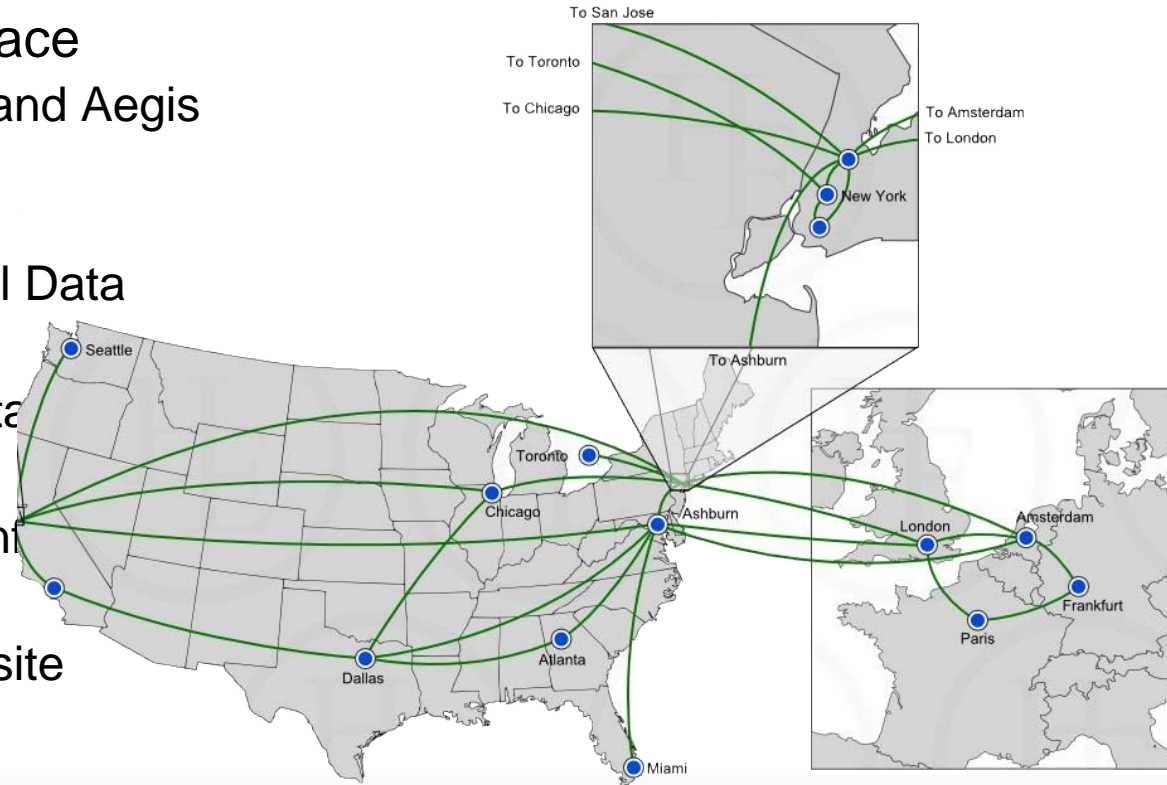


What is Trackster?

Experts in Chem-Feed and Water Treatment

■ Human Machine Interface

- ✓ Interact with Multiflex and Aegis controllers
- ✓ View real-time status
- ✓ Reporting on Historical Data
- ✓ AutoPoll Alarms
- ✓ AutoPoll Historical Data
- ✓ Configure I/O
- ✓ Save and Restore Config
- ✓ Custom Live Views
- ✓ Connect remote from site



Questions?