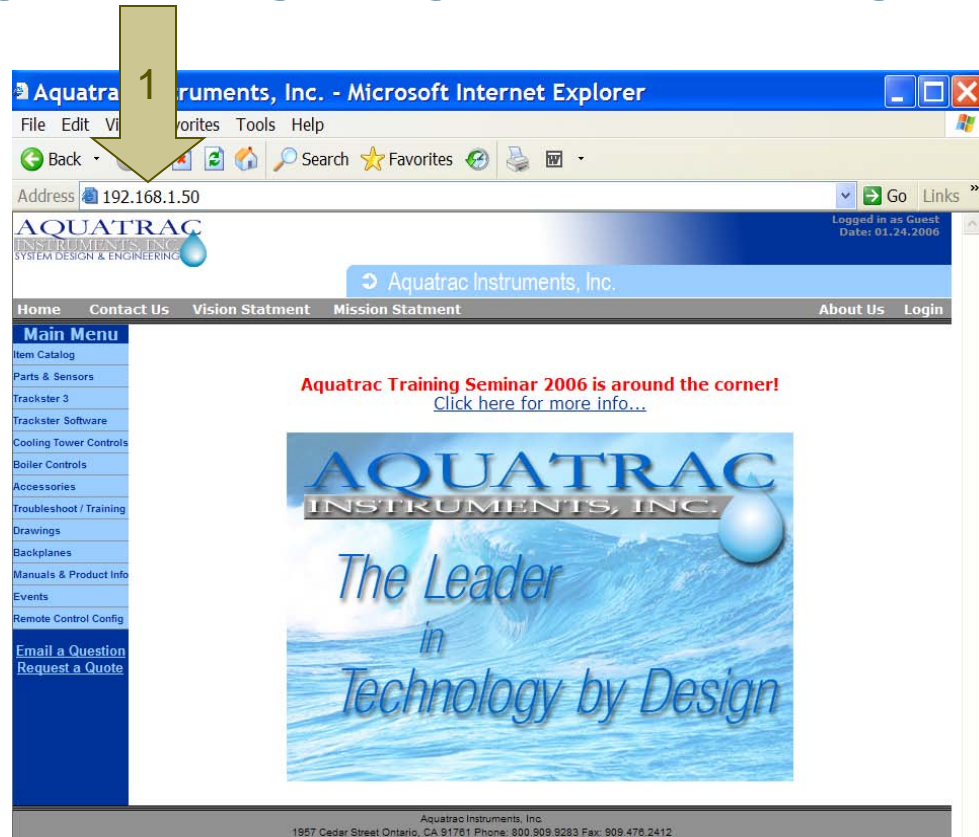


HOW TO SET THE IP ADDRESS OF YOUR PC



BROWSER CONNECTION - REMOTE

The Browser can connect to a MultiFLEX in two ways; directly or remotely. A remote connection can be accomplished by obtaining the IP address of the MultiFLEX controller from the customers IT department. You will not be able to connect remotely if the IT department does not allow your PC to access their plant. If permitted, open your favorite web browser and connect to the internet. Enter the IP address, as shown here (1), received from the IT department.



If using this remote connection, skip the following Local Connection sections and continue with the View section

AQUATRAC ON-LINE CONTROLLERS

- Aegis IP ADDRESSES : (Use Internet Browser or Trackster 3)
 - 66.146.13.235
- MultiFLEX IP ADDRESSES: (Use Internet Browser or Trackster 3)
 - MultiFLEX 2 66.146.13.206
 - MultiFLEX 3 66.146.13.207
- MultiFLEX MODEM PHONE NUMBER: (Use Trackster 3)
 - (909)937-4089
- MicroFLEX IP ADDRESS : (Use Internet Browser)
 - Tower Controller 66.146.13.222
 - Boiler Controller 66.146.13.223
- SlimFLEX IP ADDRESS: (Use Internet Browser)
 - Tower Controller 66.146.13.226
- ProMtrac IP ADDRESS: (Use Internet Browser)
 - Tower Controller 66.146.13.239



CONNECTION – LOCAL - ETHERNET SETUP

In order to establish a local connection with the MultiFLEX, you will need to:

- A. Determine the MultiFLEX IP address and subnet mask
- B. Configure the TCP/IP address on your PC's network connections
- C. Connect your PC using a CAT5 Crossover Ethernet cable
- D. When finished, return your TCP/IP address to automatic

CONNECTION – ETHERNET SETUP - A



A Determine the IP and subnet mask

Use the MultiFLEX key-panel, on the front of the controller, to access this information



Escape

Press the **Escape** button to move to the top menu. Press the key repeatedly, until the screen no longer changes. You are now in the main menu

Press the **Up** arrow until you see the cursor  next to the line that says: 



Enter

Press the **Enter** key to invoke the system menu

Press the **Down** arrow to move the cursor to the **LAN Setup** menu and press **Enter**

Make note of the IP address shown and press the **Down** arrow to view the subnet mask

CONNECTION – ETHERNET SETUP

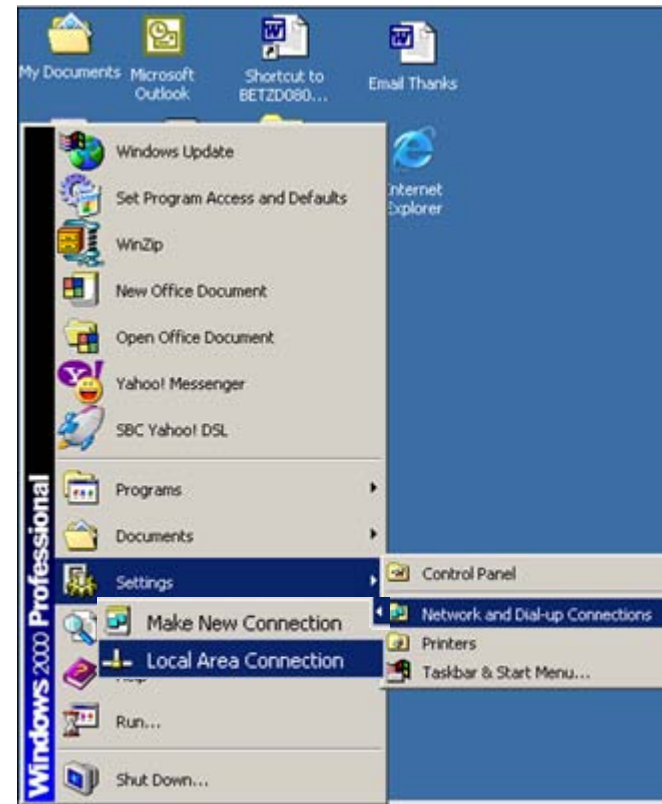
STEP B1

WINDOWS XP PROFESSIONAL



Select Start, Connect to, Show all connections

WINDOWS 2000

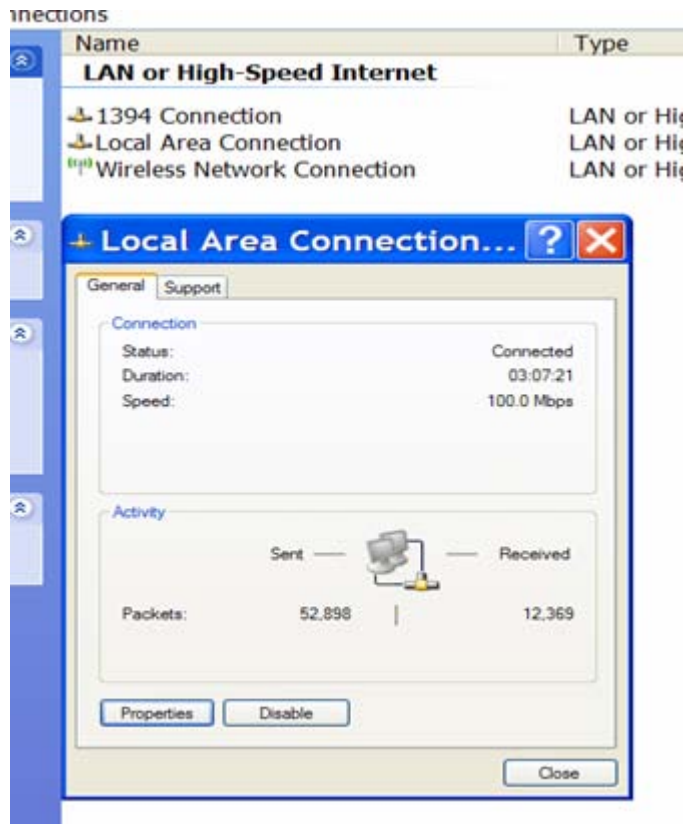


Select Start, Settings, Network and Dial-up Connections, Local Area Connections

CONNECTION – ETHERNET SETUP

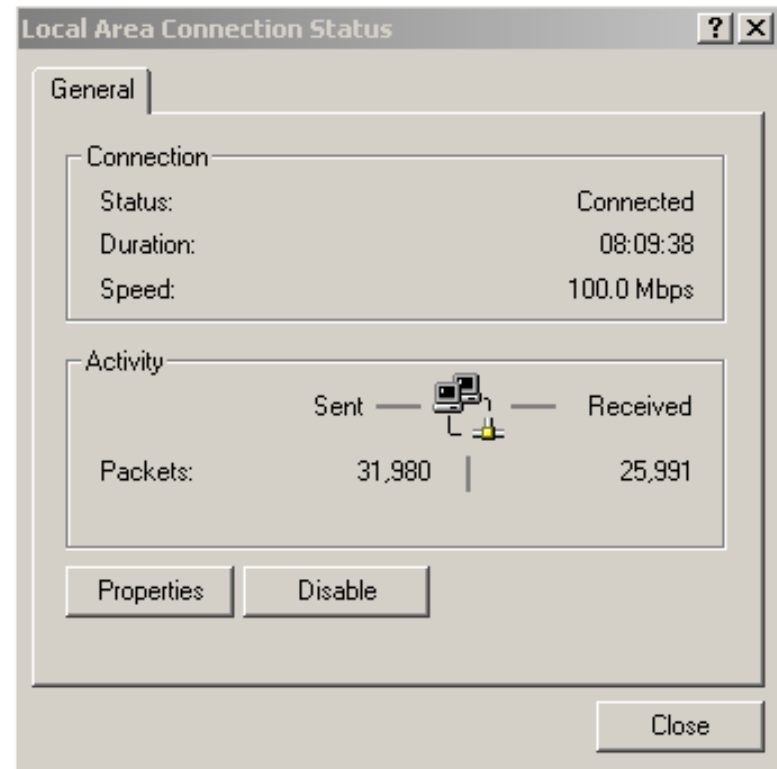
STEP B2

WINDOWS XP PROFESSIONAL



Double click on Local Area Connection and select Properties from the pop-up window

WINDOWS 2000

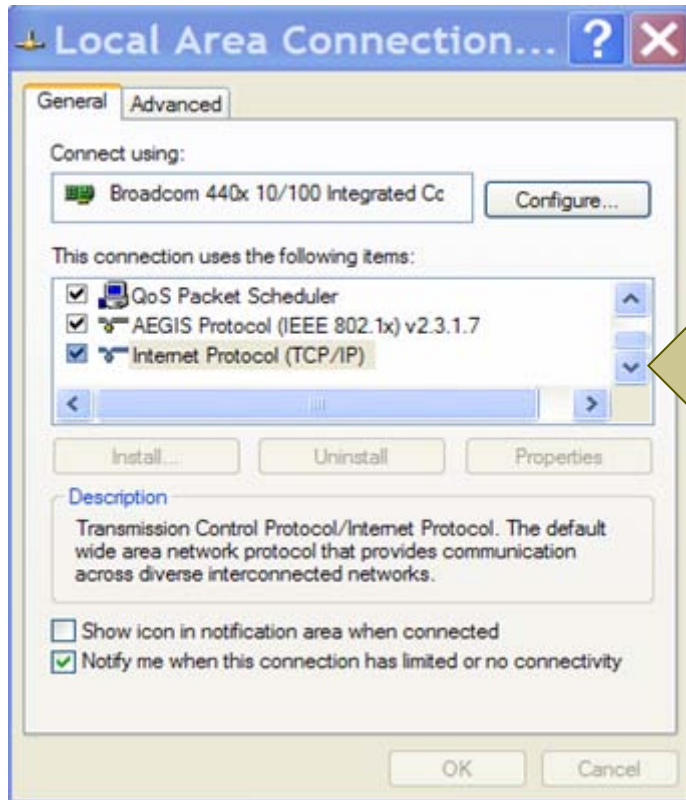


Select Properties

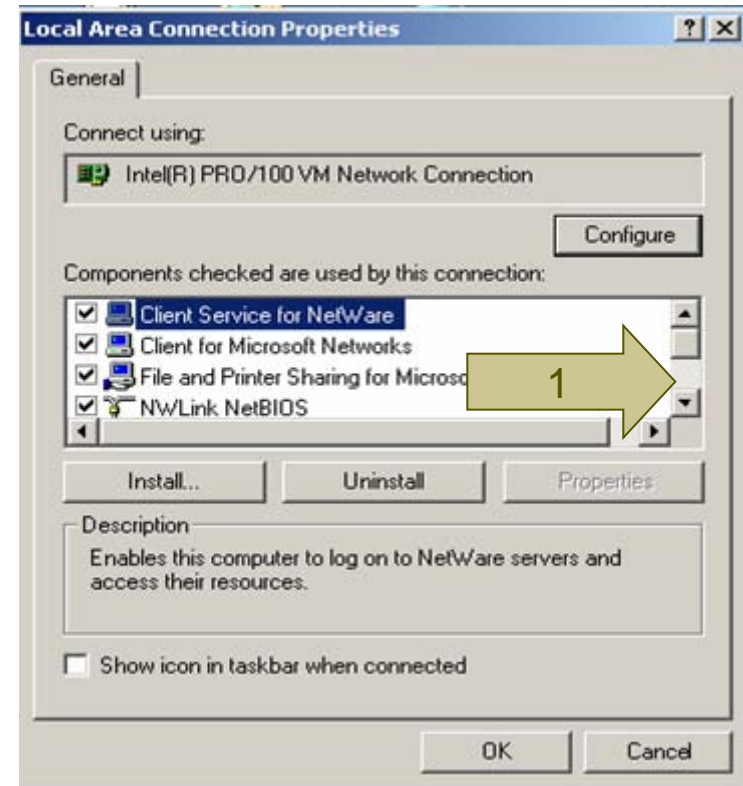
CONNECTION – ETHERNET SETUP

STEP B3

WINDOWS XP PROFESSIONAL



WINDOWS 2000



Pull down the slide bar (1) until Internet Protocol (TCP/IP) appears and highlight this item. Select Properties

CONNECTION – ETHERNET SETUP

STEP B4

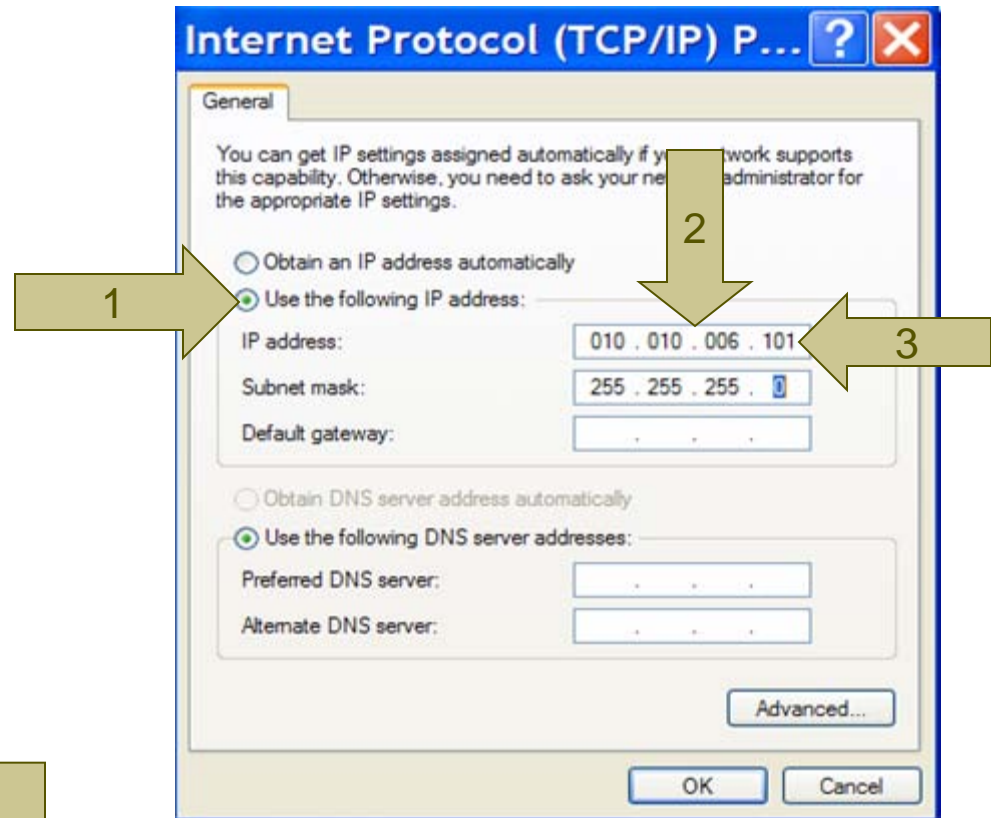
Select the Use the following IP address: circle (1)

Enter the first three numbers of the controller's IP address (2)

Example: 010.010.006.____

Then enter a number between 000 and 255 that is different from the controller address

In this example, since the controller is 010.010.006.106, we used 101 (3)



Press the Tab key and enter the Subnet mask of 255.255.255.0
Select OK here and on the Local Area Connection window

CONNECTION – LOCAL - CABLE - C

LOCAL CONNECTION

Requires CAT5
Ethernet Crossover
cable

Connect crossover
cable from PC to
controller

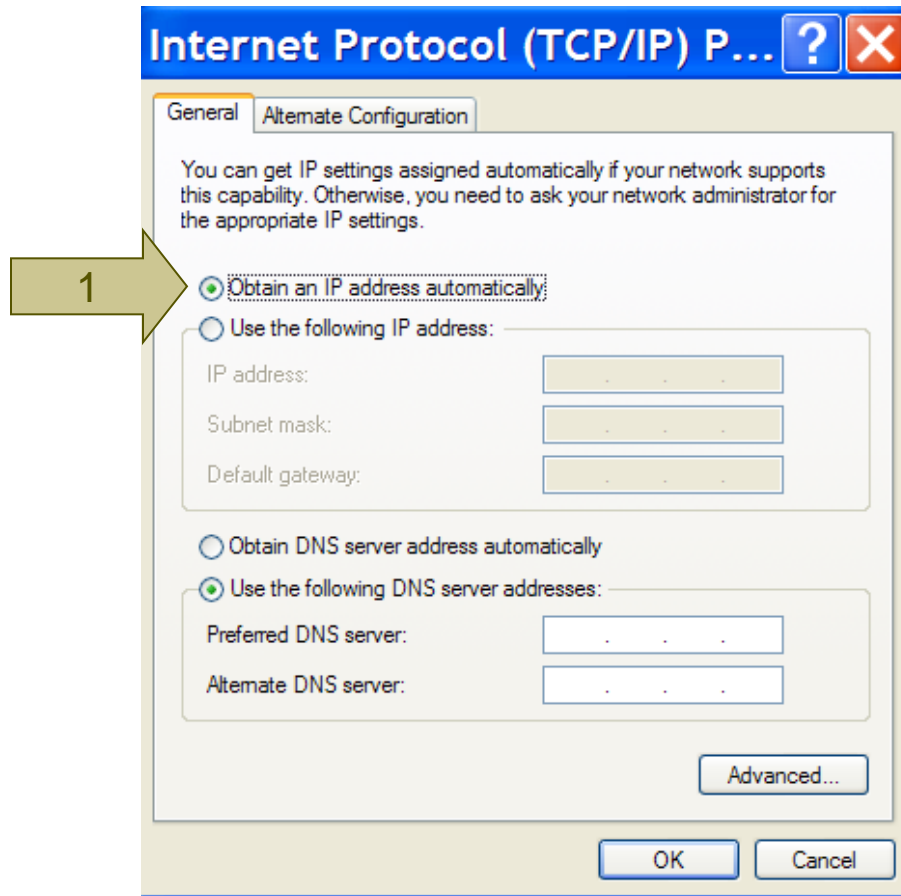
Open WEB Browser

Enter controller IP
address (1). Press enter



CONNECTION – ETHERNET SETUP

D RETURN



Once you have concluded your Browser session with the MultiFLEX, you should reconfigure your PC to Obtain an IP address automatically by selecting the circle (1) as shown

Use Connection – Ethernet setup steps 1 through 4 to get to this screen

Select OK on this screen and then again on the Local Internet Connection window